

vti

FINDING A BETTER WAY

Ringanalyser

Leif Viman

Ringanalyser

Genomförda:

- Gjutafalt (genomförd 2010)
- Prall 2010 (Skanska)
- Bitumen (jmf 2009, 2010)

Planerade:

- Rullflaskmetoden (2011)
- (Stenmaterial)
- (Dynamisk kryptest)
- (Prall)

vti

Metodgruppen's - ringanalyssgrupp

- Leif Viman, VTI
- Kenneth Vikström, NCC
- Thomas Karlsson, Skanska
- Mats Jonsson, Svevia
- Lars Jansson, Peab

vti

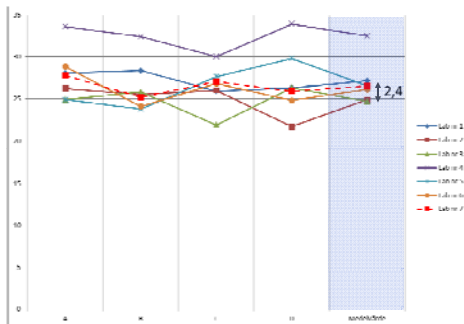
Ringanalys gjutasfalt 2010 (VTI/DAB)

Egenskap	Provningsstandard
Bindemedelshalt	SS-EN 12697-1, -39
Kornkurva	SS-EN 12697-2
Stämpelbelastningstid	FAS Metod 447-98
Stämpelbelastningsvärde	FAS Metod 465-00
Stämpelbelastning	SS-EN 12697-20
Formstabilitet	SS-EN 12970

www.metodgruppen.nu

vti

Ringanalys Prall 2010 (Skanska)



www.metodgruppen.nu

vti

Ringanalys Bitumen 2009 och 2010 (Neste)

Penetration:

Table 3 — Precision

Operating conditions	Penetration in 0,1 mm	Repeatability, r	Reproducibility, R
25 °C			
100 g	< 50	2	3
5 s	≥ 50	4 % of the mean value	6 % of the mean value

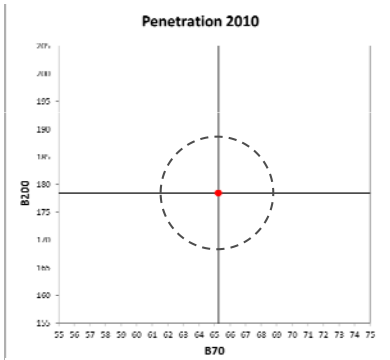
Mjukpunkt:

Table 1 — Precision

Bath liquid	Type of bitumen	Repeatability r_s , °C	Reproducibility R_s , °C
Water	Unmodified	1,0	2,0
Water	Polymer modified	1,5	3,5
Glycerol	Oxidised	1,5	5,5

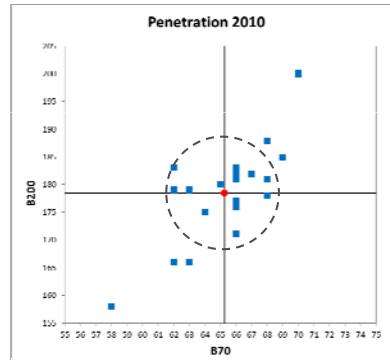
vti

Ringanalys bitumen 2010 penetration

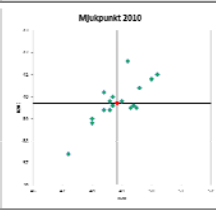
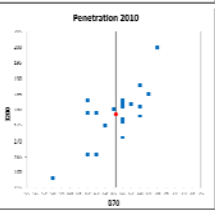
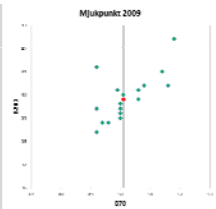
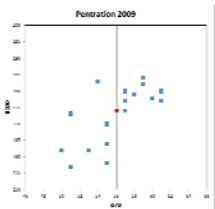


vti

Ringanalys bitumen 2010 penetration



vti



www.metodgruppen.nu

vti

Ringanalys rullflaskmetoden 2011

Anmäl er nu!

leif.viman@vti.se

vti